

## 3cm and 3km —Looking at the opposite shore—

3cm  
厚地朋子 | Tomoko Atsuchi



3km  
石井佑果 | Yuuka Ishii

2023.6.30<sup>金</sup>–7.29<sup>土</sup>

TEZUKAYAMA GALLERY—VIEWING ROOM

TEZUKAYAMA GALLERY is pleased to announce a painting exhibition “3cm and 3km - Looking at the opposite shore - “ by Tomoko Atsuchi and Yuuka Ishii.

Atsuchi was born in 1984 and grew up in Kyoto prefecture. Completed a master’s degree at Kyoto City University of Arts, department of oil painting, and she has been working based in Kyoto as an artist. Her work cannot capture in a simple and straightforward way such as perspective but she expresses the space that spreads out in front of her in the form of paintings. Time and space are shown to be standing connected, which is represented as a single “wall” of the world, with several vanishing points and light sources on both the inside and outside of the image.

In recent years, she has been showing paintings that have a more introspective impression, focusing on both internal and external of herself such as landscapes during the trips, casually snapped photos, memories, emotions, and thoughts.

Ishii was born in 1995 in Kagawa prefecture. She completed the master’s course at the Tokyo University of the Arts, oil painting department last year and now works and lives in Tokyo. Her work is based on the theme of analyzing and evaluating the framework and aesthetic principals that enable a painting. Using symbols like the alphabet, playing cards, and piano scores as well as motifs and brush stroke shows stereotypical Western paintings such as fruits, plants, vase and landscapes, she carefully constructs a composition and combination from a wide range of options that will stand alone as a painting all on canvas at the stage of esquisse.

Atsuchi’s works are more painting intimate objects in a way that echoes of colors and shapes on the canvas and allows the brushstrokes to make decisions about the final painting, her works revealed the painter’s emotion. On the other hand, Ishii constructs an instructional painting space while overlooking the structure of the painting and its supporting elements, giving the impression of smoke inducing the viewer. Ishii’s works may be viewed as contrasting in the way she perceives and emphasizes the relationship between “seeing” and “painting” in the creation of her paintings.

However, we can see that both artists’ works through the act of “painting”, have a common gaze that considers measuring this universe.

## BIOGRAPHY

**Tomoko ATSUCHI**

Lives and works in Kyoto, Japan

- 1984 Born in Okayama and grow in Kyoto, Japan  
 2008 Kyoto City University of Arts, B.F.A  
 2010 Kyoto City University of Arts Graduate School, M.F.A

**SELECTED SOLO EXHIBITIONS**

- 2022 'Floating House' | Kamogawa arts & kitchen, Kyoto  
 2021 'Leggings Kappo' | kumagusuku SAS, Kyoto  
 2020 'Ashamed Painting' | TEZUKAYAMA GALLERY, Osaka  
 2019 'You just don't get it' | FINCH ARTS, Kyoto  
 2016 'Cosmic Dance' | taimatz, Tokyo  
 2012 'Beautiful Wife' | taimatz, Tokyo  
 2009 'The Snake Nest' | TARO NASU, Tokyo

**SELECTED GROUP EXHIBITIONS**

- 2023 'Kyoto Art for Tomorrow 2023' | The Museum of Kyoto, Kyoto  
 2022 'NEW INTIMACIES -WILD WILD WEST -'  
 Gallery PARC ,Kyoto  
 2021 'The 10th KIYOSU CITY HARUHI PAINTING TRIENNALE'  
 Kiyosu City Haruhi Art Museum,Aichi  
 2020 'A triangle pyramid' | MEDIA SHOP | gallery 2, Kyoto  
 2019 'Patching (and Darning)' | TEZUKAYAMA GALLERY , Osaka  
 2018 'ROKKO MEET ART 2018' | Rokko Sancho Station , Kobe  
 'The painter's photography exhibition' | soda, Kyoto  
 2017 '2016 Kyo-Ten' | Kyoto Municipal Museum of Art, Kyoto  
 2014 'The Way of Painting' | Tokyo Opera City Art Gallery, Tokyo  
 'egØ -Re-examining the Self-' | punto, Kyoto  
 2013 'We are particles of water, separate but for the wave in which-  
 we are one.' | Kyoto City University of Arts @KCUA, Kyoto  
 'TSCA Rough Consensus' | HOTEL ANTEROOM KYOTO,  
 Kyoto  
 'Lost in the neighborhood' | taimatz, Tokyo  
 2012 'OUR HIDDEN PLACES' | a room, Kyoto  
 2010 'Waku-Waku KYOTO' | Former-Rissei Primary School, Kyoto  
 'GARDEN OF PAINTING—Japanese Art of the 00s'  
 The National Museum of Art, Osaka  
 2009 'only one' | MOT/ARTS, Taiwan  
 'no name' | ZAIM, Yokohama / Former-Rissei Primary School,  
 Kyoto

**Yuuka ISHII**

Lives and works in Tokyo, Japan

- 1995 Born in Kagawa, Japan  
 2019 Tama Art University University of Arts, B.F.A  
 2022 Tama Art University of Arts Graduate School, M.F.A

**SELECTED SOLO EXHIBITIONS**

- 2021 'Expressionless View' | KOMAGOME1-14cas, Tokyo  
 2020 'Francesca on a Diagonal' | Tokyo University of the Arts, Tokyo  
 2019 'Largo' | River Coffee and Gallery, Tokyo  
 2017 'Flower Hidden Secrets' | Tokyo Arts and Space Hongo, Tokyo

**SELECTED GROUP EXHIBITIONS**

- 2023 'Two-Person Exhibition: Yuka Shiohara, Yuka Ishii'  
 Satoko Oe Contemporary, Tokyo  
 'Yuka Ishii, Taro Maruyama: ENCOUNTER'  
 Mitsukoshi Contemporary Gallery, Tokyo  
 'Long-winded Anemometer' | Long-winded Anemometer, Tokyo  
 'PALALLEL e.g.1: Yuka Ishii, Ichiro Kinoshita'  
 HANSOTO, Shizuoka  
 'The 70th Tokyo University of the Arts Graduation and Completi-  
 on Works Exhibition' | Tokyo University of the Arts, Ueno Camp-  
 us Painting Building, Tokyo  
 2021 'birds' | OGU MAG, Tokyo  
 'The 85th Kagawa Prefectural Art Exhibition' | Kagawa Prefectural  
 Museum, Takamatsu City  
 'birds' | OGU MAG, Tokyo  
 2019 'pepepepepepe' | Tokyo University of the Arts, Ueno Campus,  
 Tokyo  
 'The 84th Kagawa Prefectural Art Exhibition' | Kagawa Prefectural  
 Museum, Takamatsu City  
 'Small Paintings Exhibition' | Geidai Art Plaza, Tokyo  
 2018 'Kiyosu City Haruhi Painting Triennial 2018' | Haruhi Museum ,  
 Aichi  
 '3pieces' | Ogicho 1-1 Studio, Yokohama  
 'Utatsu Art Award Biennale Selected and Award-Winning Works-  
 Exhibition' | Utatsu City, Kagawa  
 'Turner Award 2017 Prize and Selected Works Exhibition' | Turner-  
 Gallery, Tokyo  
 2017 'TWIN ROOM' | Ebisu Zava Gallery, Tokyo  
 2016 'pity now' | Kiyosumi Shirakawa SAKURAgallery, Tokyo  
 'Utsura' | Tama Art University Hachioji Campus, Tokyo  
 'The 3rd Utadu Art Award Prize and Selected Works Exhibition'  
 Utadu City, Kagawa  
 'Failure.' | ZAVAgallery, Tokyo

ARTWORKS



1.



2.



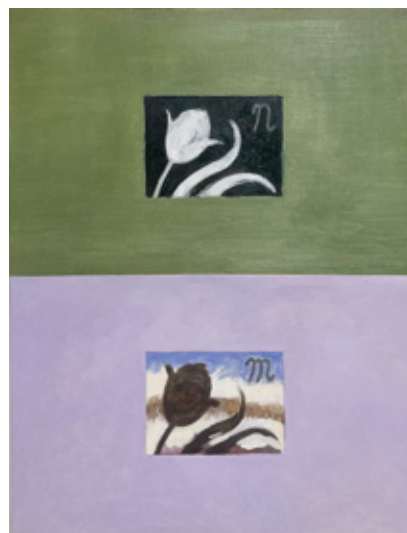
3.



4.



5.



6.

1. Floating House, 2023, oil on canvas, H1900×W1200mm / Tomoko Atsuchi
2. Basin Spatial Awareness #2, 2021, oil on canvas, H1600×W1200mm / Tomoko Atsuchi
3. What's outside you is inside me, 2021, oil on canvas, H1450×W1125mm / Tomoko Atsuchi
4. untitled, 2021, oil on canvas, H910×W610mm / Yuuka Ishii
5. untitled, 2021, oil on canvas, H1000×W803mm / Yuuka Ishii
6. untitled, 2022, oil on canvas, H606×W455mm / Yuuka Ishii

EXHIBITION INFORMATION

厚地朋子 | Tomoko Atsuchi 石井佑果 | Yuuka Ishii

3cmと3km —対岸を眺める—  
3cm and 3km —Looking at the opposite shore—

2023.6.30金—7.29土  
TEZUKAYAMA GALLERY—VIEWING ROOM

営業時間: 火 - 土 12:00 - 19:00 | 休廊日: 日曜日・月曜日・祝日  
OPEN: Tue - Sat 12:00 - 19:00 | CLOSED: Sunday, Monday and Holiday  
お問合せ: info@tezukayama-g.com / 岡田 (TEZUKAYAMA GALLERY)

〒550-0015 大阪市西区南堀江1-19-27山崎ビル2F  
Yamazaki Bldg. 2F, 1-19-27 Minami-Horie, Nishi-ku, Osaka, 550-0015 JAPAN  
tell: +81 6 6534 3993 / instagram: tezukayama\_g

