

TEZUKAYAMA GALLERY



栗棟美里 個展
Misato Kurimune Solo Exhibition
あなたはこの世界にいるかもしれない。
もしくははいないかもしれない。
You may be in this world. Or you may not be.

3.26 Fri - 4.24 Sat, 2021

TEZUKAYAMA GALLERY - Main Gallery

TEZUKAYAMA GALLERY / MAIN GALLERY is pleased to hold an exhibition 'You may be in this world. Or you may not be' by Misato Kurimune.

Born in 1988, Kurimune majored in printing at Kyoto Seika University B.A. and M.A.. Now Kurimune is based in Kobe. Kurimune had this strong awareness of being an artist while she was at university and she is always trying to find the essence of beauty, existence, time, and life by using mixed media based on her photographs.

'Still Remained' which we exhibited in 2018, the theme of this exhibition was reconsidering the essence of perception that relies on vision and how to make/see art. This was an experiment in which Kurimune tried to crush the images and information and turned it into art. Or, tried to ask the audience what is the essence of "seeing" in this information-oriented society.

The audience can see that attitude of her challenging that question at this exhibition. In the recent world, we use online communications through screens on a daily basis. Kurimune says this new technology which we can use anytime anywhere made new lifestyles and made our life easier but also created this feeling of loss of reality.

For the first time in two years, with the theme of "portrait", which is one of the oldest themes of photography, we will present her works of fictional people. We will exhibit a large work 'You may be in this world. Or you may not be' which is also this exhibition's title, and 17 other new works. Please take this opportunity to see Kurimune's works.

Artist's statement

I will point out the reality of portraits through devices, and will pose visual experiences at this exhibition named 'You may be in this world. Or you may not be'.

In recent years there has been an increase in online communication, we see people's faces and emotions through a computer, tablet, or phone. These devices are infiltrating our daily lives however, I feel this electronic change and flicker is different than the reality of daily life as an artist who uses photography.

We can move around the world through the internet, the person who is on the other side of the screen might not be in Japan, or it is just a recorded video pretending like it is real-time streaming.

It is difficult to detect 'where they are from, how old they are, or what they are doing now'.

Photography used to be a record of something however, the original data tends to be edited now. When I face the situation where they treat photography as an iconography, I often think about the reality of photography itself or portraits in this uncertainty.

I used my own photography and data from the internet to make these portraits of fictional people. I also used a lenticular lens so that when audiences see these images, they will disappear vaguely and slowly.

I am hoping that through this active visual experience, audiences can rethink reality and find a new point of view through this visual experience.

栗棟 美里

兵庫県神戸市在住

1988 兵庫県神戸市生まれ

2011 京都精華大学芸術学部メディア造形学科版画コース卒業

2013 京都精華大学大学院芸術研究科博士前期課程版画専攻修了

主な個展

- 2021 「あなたは这个世界にいるかもしれない。もしくはいないかもしれない。」
| TEZUKAYAMA GALLERY
- 2020 「栗棟美里展」 | オーベルジュ玄珠, 岐阜
- 2018 「Still Remained」 | TEZUKAYAMA GALLERY
- 2016 「皮下の過激から理性への回帰」 | TEZUKAYAMA GALLERY
- 2015 「Flash ⇄ Infinity」 | eN arts, 京都
- 2014 ART OSAKA 2014 「Complex Wedding」
| ホテルグランヴィア大阪
- 2013 「Complex/Crushed/Condolence」 | TEZUKAYAMA GALLERY

主なグループ展, アートフェア

- 2021 「Kyoto Art for Tomorrow 2021 - 京都府新鋭選抜展 -」
| 京都文化博物館
- 2018 「Re: Focus vol. 3」 | TEZUKAYAMA GALLERY
- 2017 「spiral take art collection 2017 蒐集衆商」
| スパイラルガーデン, 東京
- 2015 「世界の逸品展 現代アートの扉-DOORS」 | ウェスティンホテル東京
「FOTOFEVER 2015」 | CARROUSEL DU LOUVRE, パリ
- 2013 「Re:Focus」 | TEZUKAYAMA GALLERY
「PAT in Kyoto 京都版画トリエンナーレ2013」 | 京都市美術館
「ART TORONTO 2013」 | Metro Toronto Convention Center,
カナダ
- 2012 「ART FAIR TOKYO 2012」 | 東京国際フォーラム
「2012 京展」 | 京都市美術館
「Work in Progress」 | Matsuo Megumi + Voice Gallery, 京都
「版画の断面-4」 | 東北芸術工科大学 本館7階ギャラリー, 山形
- 2011 「第36回全国大学版画展」 | 町田市立国際版画美術館, 東京
「烏丸Michikusa Art」 | ラクエ四条烏丸・Cocon Karasuma, 京都
「Shashin?」 | TEZUKAYAMA GALLERY
「2011 京展」 | 京都市美術館
- 2010 「第35回全国大学版画展」 | 町田市立国際版画美術館, 東京
「2010 京展」 | 京都市美術館

Misato Kurimune

Lives and works in Kobe, Hyogo, Japan

1988 Born in Kobe, Hyogo, Japan

2011 Kyoto Seika University, BFA, Print Making Course

2013 Kyoto Seika University, MFA, Print Making Course

SELECTED SOLO EXHIBITIONS

- 2021 'You may be in this world. Or you may not be.'
| TEZUKAYAMA GALLERY
- 2020 'MISATO KURIMUNE Solo Exhibition' | Auberge Genju, Gifu
- 2018 'Still Remained' | TEZUKAYAMA GALLERY
- 2016 'From the Extreme of Subcutaneous to the Return to Reason'
| TEZUKAYAMA GALLERY
- 2015 'Flash ⇄ Infinity' | eN arts, Kyoto
- 2014 ART OSAKA 2014 'Complex Wedding'
| Hotel Granvia Osaka
- 2013 'Complex/Crushed/Condolence' | TEZUKAYAMA GALLERY

SELECTED GROUP EXHIBITIONS, ART FAIRS

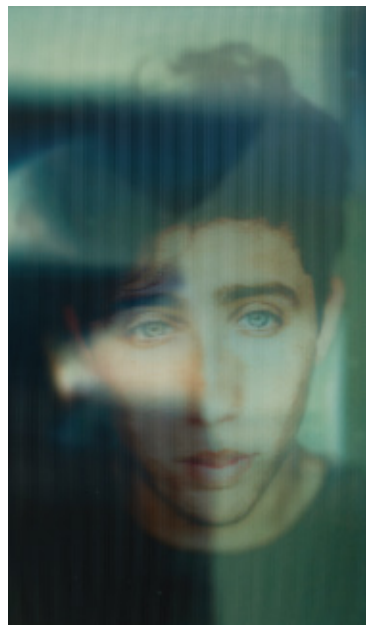
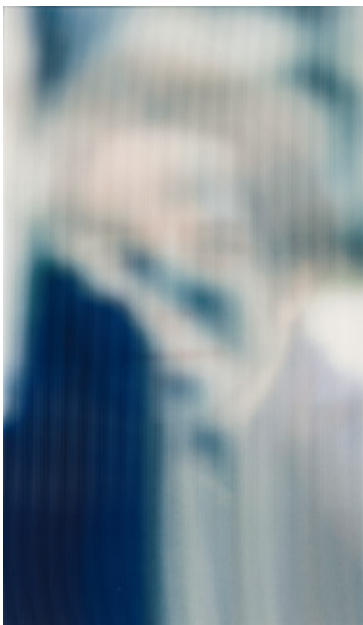
- 2021 'Kyoto Art for Tomorrow 2021' | The Museum of Kyoto
- 2018 'Re: Focus vol. 3' | TEZUKAYAMA GALLERY
- 2017 'spiral take art collection 2017 SHU SHU SHU SHOW'
| Spiral Garden, Tokyo
- 2015 'Doors' | The Westin Tokyo
'FOTOFEVER 2015' | CARROUSEL DU LOUVRE, Paris
- 2013 'Re:Focus' | TEZUKAYAMA GALLERY
'ART TORONTO 2013' | Metro Toronto Convention Center,
Canada
- 2012 'Art Fair Tokyo 2012' | Tokyo International Forum
'Kyoten 2012' | Kyoto Municipal Museum of Art
'Work in Progress' | Matsuo Megumi + Voice Gallery, Kyoto
'Cross-Section of Prints 4' | Tohoku University of Art and
Design, Yamagata
- 2011 'The 36th Annual Exhibition of the Association of Japanese
Art Colleges' | Machiba City Museum of Graphic Arts, Tokyo
'KARASUMAmichikusaART' | LAQUE SHIJO KARASUMA・
COCON KARASUMA, Kyoto
'Shashin?' | TEZUKAYAMA GALLERY
'Kyoten 2011' | Kyoto Municipal Museum of Art
- 2010 'The 35th Annual Exhibition of the Association of Japanese Art
Colleges' | Machida City Museum of Graphic Arts, Tokyo
'Kyoten 2010' | Kyoto City Museum of Art

□ 作品 | Artworks



Exhibition View: 栗棟美里 個展「Still Remained」, 2018 / TEZUKAYAMA GALLERY

Exhibition View: 栗棟美里 個展「Still Remained」, 2018 / TEZUKAYAMA GALLERY



(L to R)
Images / Portrait #05
2021
ink-jet print, lenticular lens
H355 × W204 mm

Images / Portrait #06
2021
ink-jet print, lenticular lens
H355 × W204 mm

□ 展覧会情報 | Exhibition Info

栗棟美里 | Misato Kurimune

「あなたは这个世界にいるかもしれない。もしくはいないかもしれない。」
‘You may be in this world. Or you may not be.’

2021.03.26 Fri - 04.24 Sat

営業時間: 火 - 土 12:00 - 19:00 | 休廊日: 日曜日・月曜日・祝日
OPEN: Tue - Sat 12:00 - 19:00 | CLOSED: Sunday, Monday and Holiday
お問合せ: info@tezukayama-g.com / 岡田 (TEZUKAYAMA GALLERY)
技術協力: 日本コーバン株式会社
Technical Cooperation: COBURN JAPAN CORPORATION

〒550-0015 大阪市西区南堀江1-19-27山崎ビル2F
Yamazaki Bldg. 2F, 1-19-27 Minami-Horie, Nishi-ku, Osaka, 550-0015 JAPAN

t: +81 6 6534 3993 | f: +81 6 6534 3994 | e: info@tezukayama-g.com

